

## Human Machine Interface with 4.3" TFT LCD display



### ◆ Features

- 4.3" 480x272 TFT LCD
- Fan-less cooling system
- NEMA4/IP65 compliant front panel
- LED Back Light
- One USB Client port
- Power Isolator Inside
- Com1 RS485 supports MPI 187.5K

### 【 Introduction 】

MT6000 series is the new HMI generation of Weintek. With the design concept of meeting customers' satisfaction while easy-to-Use attribute as before, a MT6000 not only performs as a Human Machine Interface but also plays as a role of data exchange center. MT6000 series is the best choice for your requirement tomorrow.

MT6050iV3 includes a USB 2.0 high speed device.

### ◆ Specifications

- **Construction:** plastic molding housing
- **Display:** 4.3" 65,536 color TFT LCD
- **CPU and core logic:** 32Bit RISC 400MHz processor
- **DRAM:** 64 MB DDR2 on board
- **Storage:** 128 MB flash memory on board, Recipe memory saved in flash memory, RW 512Kword, RW\_A 64Kword.  
(User project size: 16MB, Data and Event log size: 48MB)
- **I/O:** serial ports: Com1: RS-232/RS-485 2w/4w,  
1 USB 2.0 high speed device
- **Power input:** 24±20%V<sub>DC</sub>, 250mA@24VDC
- **Dimension (W x H x D):** 128 x 102 x 38mm
- **Weight:** 0.3kg
- **Software:** EB8000 V3.0.0 or later

### ◆ LCD Display

Display type	TFT LCD
Display size (diagonal)	4.3"
Max colors	65536
Resolution	480 x 272
Pixel pitch (HxV, mm)	0.198 x 0.198
Viewing angle (°)	50/70/70/70(T/B/R/L)
Luminance (cd/m <sup>2</sup> )	300
Backlight	LED
Backlight Life time	30,000 hrs.
Contrast ratio	500:1

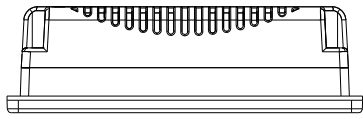
### ◆ Touchscreen

- **Type:** 4-wire, analog resistive
- **Resolution:** continuous
- **Light transmission:** above 80%
- **Life:** 1 million activation minimum

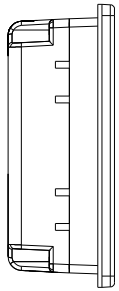
### ◆ Environmental Specifications

- **Operating temperature:** 0° ~ 50°C (32° ~ 122°F)
- **Storage temperature:** -20° ~ 60°C (-4° ~ 140°F)
- **Relative humidity:** 10% ~ 90% @ 40°C, non-condensing
- **Shock (operation):** 10 to 25Hz(X,Y,Z direction 2G 30minutes)
- **CE/FCC :** Complies with EN 55022:2006, Class A  
EN 55024:1998+A1:2001+A2:2003, EN 61000-3-2:2006,  
EN 61000-3-3:1995+A1:2001+A2:2005, IEC 61000-4-2,  
IEC 61000-4-3, IEC 61000-4-4:2004, IEC 61000-4-5,  
IEC 61000-4-6, IEC 61000-4-8, IEC 61000-4-11
- **Front panel meets NEMA4 / IP65**

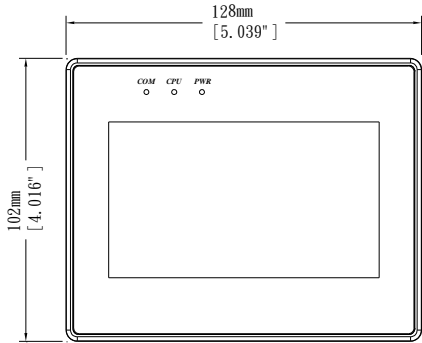
## Dimensions Drawing



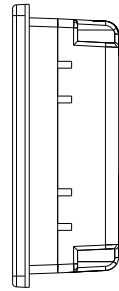
*Top View*



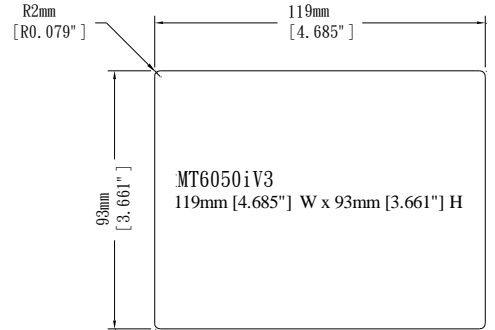
*Side View*



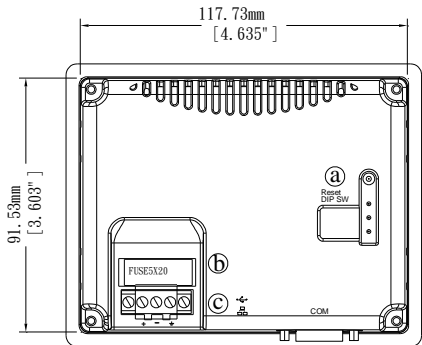
*Front View*



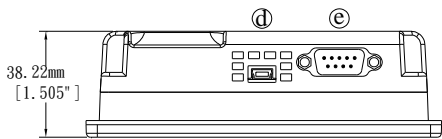
*Side View*



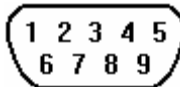
*Cutout Dimensions*



*Rear View*



*Bottom View*



### Pin Designations

Pin assignment of the 9 Pin, Male, SUB-D  
Com1[RS-232], Com1[RS-485 2w/4w]

Pin#	Com1[RS485]		Com1[RS232]
	4 wire	2 wire	
1	Rx-	Data-	
2	Rx+	Data+	
3	Tx-		
4	Tx+		
5	Signal Ground (GND)		
6			Transmit(TxD)
7			
8			
9			Receive(RxD)

## Ordering Information

□ **MT6050iV3:**

4.3" TFT LCD HMI, 128MB flash memory/64MB DDR2 RAM on board.

□ **RZCMT6100:**

MT6050iV3 series download cable / Mini USB to USB 2.0 100 cm