

Bosch Rexroth IndraControl - Free Tag Names (Ethernet)

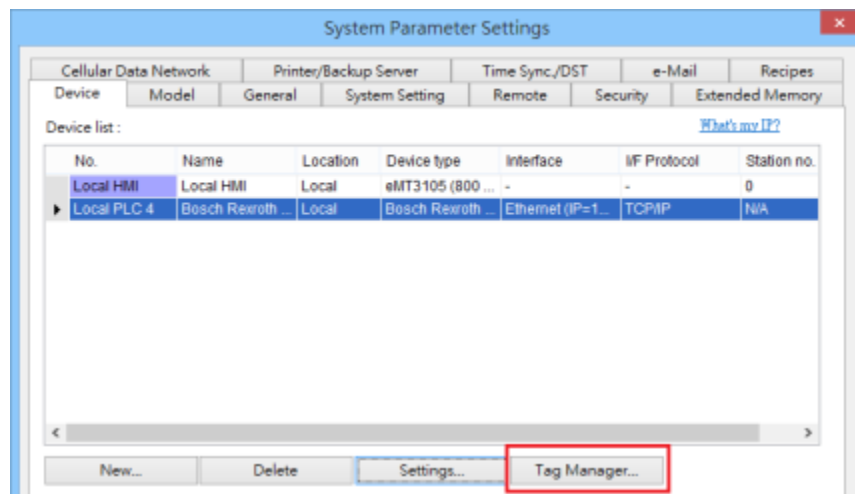
Supported series: IndraDrive HCS02

HMI Setting:

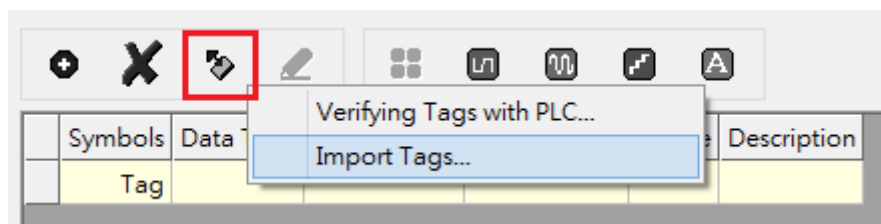
Parameters	Recommended	Options	Notes
PLC type	Bosch Rexroth IndraControl - Free Tag Names (Ethernet)		
PLC I/F	Ethernet		
Port no.	6042		

How to Import Tags:

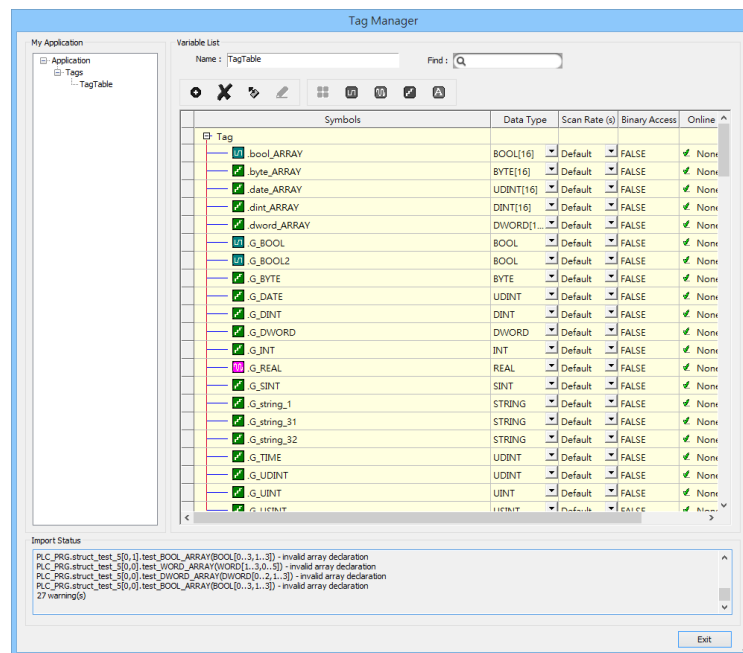
1. Click **[New]** to add **[Bosch Rexroth IndraControl - Free Tag Names (Ethernet)]** driver, and then click **[Tag Manager]**.



2. Select **[Get Tags]** » **[Import Tags]**, and then select the Tag **(.XML)** to be imported.



3. The successfully imported tags will be listed in a table. If any unsupported data type exists, a warning message will show in **[Import Status]** field.



Support Device Type:

S7-1200 data type	EasyBuilder data format	Memo
Bool	bit	
Byte	16-bit BCD, Hex, Binary, Unsigned	8-bit
SInt	16-bit BCD, Hex, Binary, Signed	8-bit
USInt	16-bit BCD, Hex, Binary, Unsigned	8-bit
Word	16-bit BCD, Hex, Binary, Unsigned	16-bit
Int	16-bit BCD, Hex, Binary, Signed	16-bit
UInt	16-bit BCD, Hex, Binary, Unsigned	16-bit
DWord	32-bit BCD, Hex, Binary, Unsigned	32-bit
DInt	32-bit BCD, Hex, Binary, Signed	32-bit
Real	32-bit Float	32-bit
UDInt	32-bit BCD, Hex, Binary, Unsigned	32-bit
Time	32-bit BCD, Hex, Binary, Unsigned	32-bit
Date	32-bit BCD, Hex, Binary, Unsigned	32-bit
String	Word array for ASCII input and display	Length=word

Wiring Diagram:

Diagram 1

Ethernet cable:

