

CODESYS V2 (Symbolic Addressing)

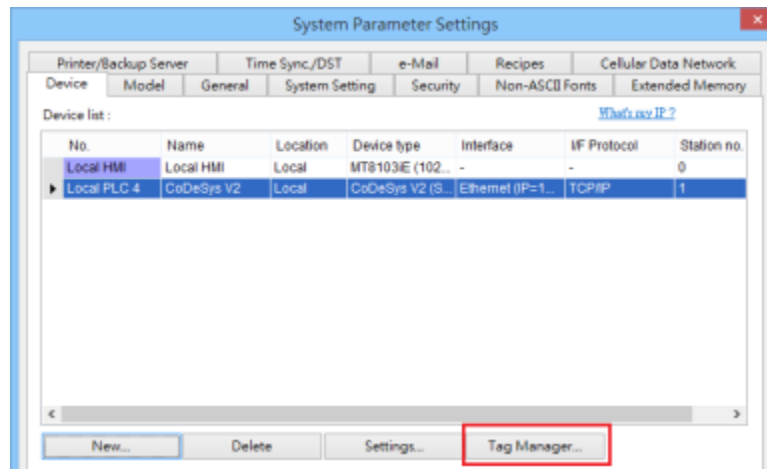
Supported Series: CODESYS V2

HMI Setting:

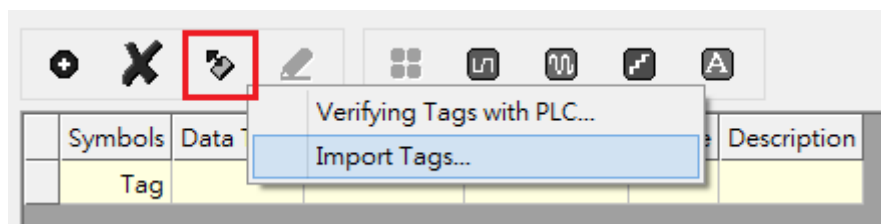
| Parameters | Recommended | Options | Notes |
|------------|----------------------------------|---------|-------|
| PLC type | CODESYS V2 (Symbolic Addressing) | | |
| PLC I/F | RS232 | | |
| Baud rate | 38400 | | |
| Data bits | 8 | | |
| Parity | None | | |
| Stop bits | 1 | | |

How to Import Tags:

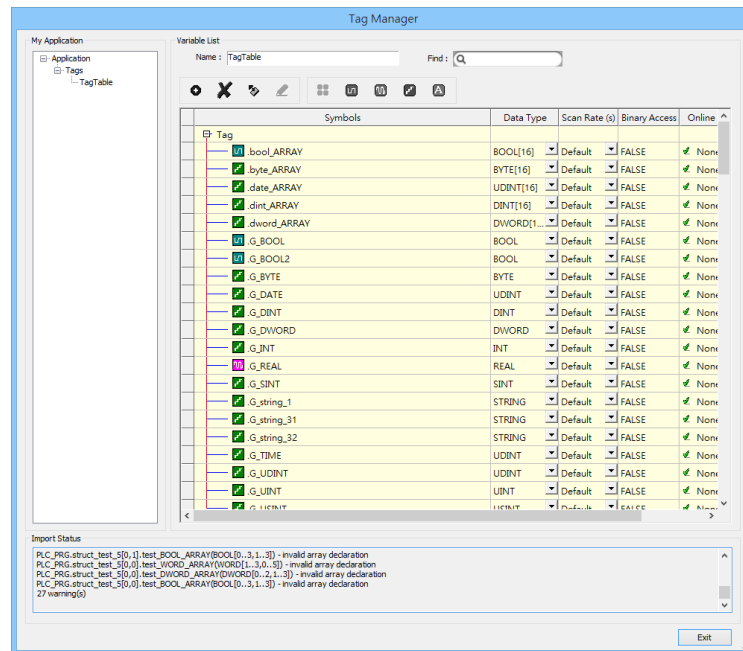
- Click **[New]** to add **[CODESYS V2 (Symbolic Addressing)]** driver, and then click **[Tag Manager]**.



- Select **[Get Tags]** » **[Import Tags]**, and then select the Tag **(.SYM_XML)** to be imported.



- The successfully imported tags will be listed in a table. If any unsupported data type exists, a warning message will show in **[Import Status]** field.



Note1: Generate *.SYM_XML

- [Project]** -> **[Options]** -> **[Symbol configuration]** , select **[Dump symbol entries]** and **[Dump XML symbol table]**.
- Open **[Configure symbol file]**, select **[Export data entries]**

Note2: EBPro V6.03.02 or later supports 64 bits data type (**cMT Series only**), but please note that the address limit range is 48 bits in maximum.

Wiring Diagram:

CM1-SC02A: RS-232 9P D-Sub (Diagram 1 ~ Diagram 3)

Diagram 1

| | |
|-------------------|---|
| cMT Series | <i>cMT3071 / cMT3072 / cMT3090 / cMT3103 / cMT3151</i> |
| eMT Series | <i>eMT3070 / eMT3105 / eMT3120 / eMT3150</i> |
| MT-iE | <i>MT8073iE / MT8102iE</i> |
| MT-XE | <i>MT8092XE</i> |
| MT-iP | <i>MT6103iP / MT8102iP</i> |

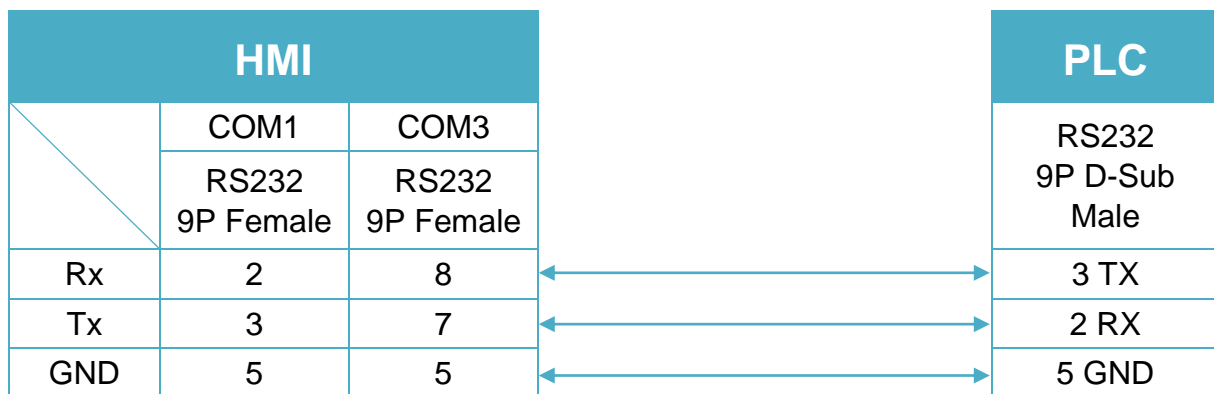


Diagram 2

| | |
|-------------------|---|
| cMT Series | <i>cMT-SVR / cMT-G01 / cMT-G02 / cMT-HDM / cMT-FHD</i> |
| mTV | <i>mTV</i> |
| MT-iE | <i>MT8070iE / MT6070iE / MT8100iE / MT8121iE / MT8150iE / MT8071iE / MT6071iE / MT8072iE / MT6072iE / MT8073iE / MT8101iE / MT8102iE / MT8103iE</i> |
| MT-XE | <i>MT8121XE / MT8150XE / MT8090XE</i> |



Diagram 3

| | |
|--------------|--|
| MT-iE | <i>MT8050iE / MT8053iE</i> |
| MT-iP | <i>MT6051iP / MT8051iP / MT6071iP / MT8071iP</i> |

