

# CODESYS V2 (Symbolic Addressing) (Ethernet)

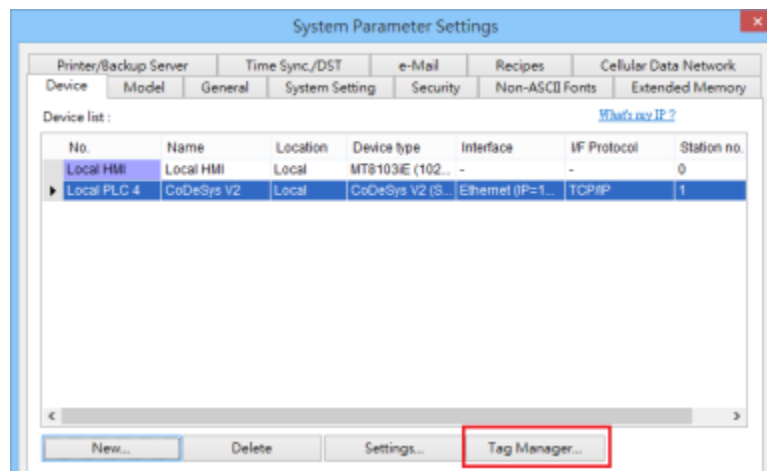
Supported series: CODESYS V2

## HMI Setting:

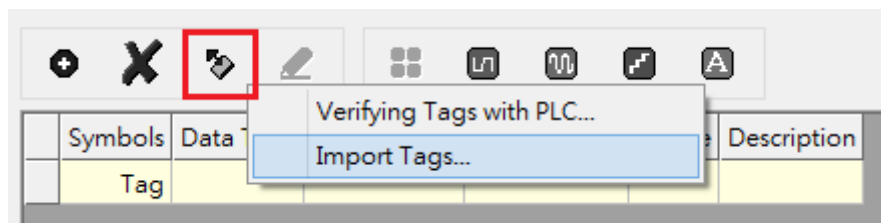
Parameters	Recommended	Options	Notes
PLC type	CODESYS V2 (Symbolic Addressing) (Ethernet)		
PLC I/F	Ethernet		
Port no.	1200		
Protocol	TCP/IP	TCP/IP, TCP/IP[Level 2]	

## How to Import Tags:

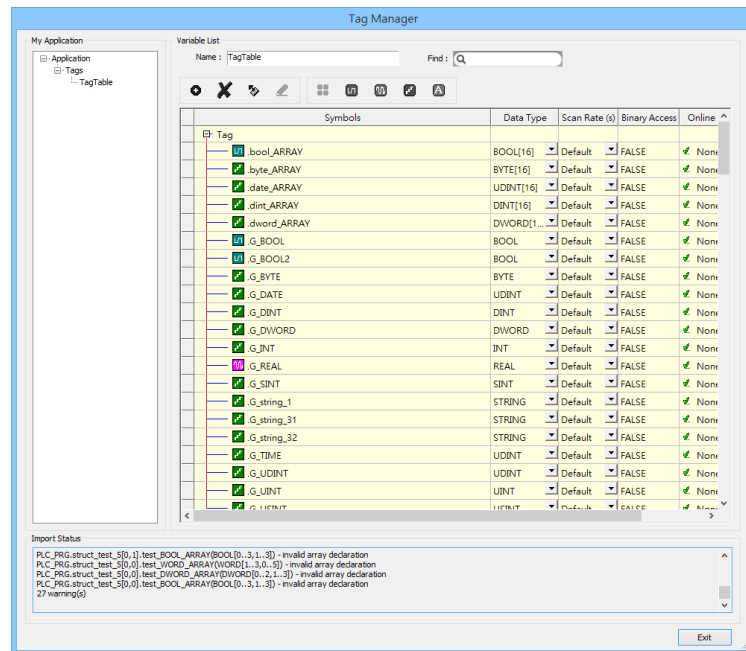
1. Click **[New]** to add **[CODESYS V2 (Symbolic Addressing) (Ethernet)]** driver, and then click **[Tag Manager]**.



2. Select **[Get Tags]** » **[Import Tags]**, and then select the Tag **(.SYM\_XML)** to be imported.

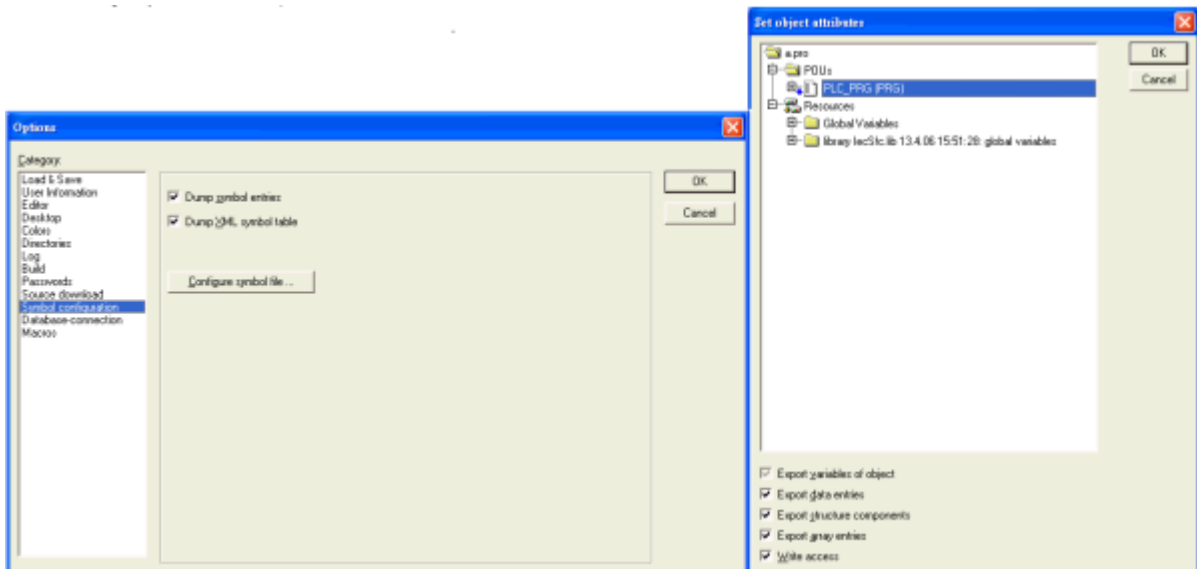


- The successfully imported tags will be listed in a table. If any unsupported data type exists, a warning message will show in **[Import Status]** field.



### Note: Generate \*.SYM\_XML

- [Project]** -> **[Options]** -> **[Symbol configuration]** , select **[Dump symbol entries]** and **[Dump XML symbol table]**.
- Open **[Configure symbol file]**, select **[Export data entries]**



## Support Device Type:

S7-1200 data type	EasyBuilder data format	Memo
Bool	bit	
Byte	16-bit BCD, Hex, Binary, Unsigned	8-bit
SInt	16-bit BCD, Hex, Binary, Signed	8-bit
USInt	16-bit BCD, Hex, Binary, Unsigned	8-bit
Word	16-bit BCD, Hex, Binary, Unsigned	16-bit
Int	16-bit BCD, Hex, Binary, Signed	16-bit
UInt	16-bit BCD, Hex, Binary, Unsigned	16-bit
DWord	32-bit BCD, Hex, Binary, Unsigned	32-bit
DInt	32-bit BCD, Hex, Binary, Signed	32-bit
Real	32-bit Float	32-bit
UDInt	32-bit BCD, Hex, Binary, Unsigned	32-bit
LInt	64-bit Signed	64-bit
ULInt	64-bit Unsigned	64-bit
LWord	64-bit Unsigned	64-bit
Double	64-bit Float	64-bit
String	Word array for ASCII input and display	Length=word

**Note:** EBPro V6.03.02 or later supports 64 bits data type (**cMT Series only**), but please note that the address limit range is 48 bits in maximum.

## Wiring Diagram:

### Diagram 1

Ethernet cable:

