

# KONNEX KNXnet/IP

Supported series: WAGO 750-849

## HMI Setting:

Parameters	Recommended	Options	Notes
<b>PLC type</b>	KONNEX KNXnet/IP		
<b>PLC I/F</b>	Ethernet		USE UDP
<b>Multi. Cast IP</b>	224.0.23.12		
<b>Port no.</b>	3671		
<b>Type</b>	KNXnet/IP Tunneling	KNXnet/IP Tunneling KNXnet/IP Routing	*Note

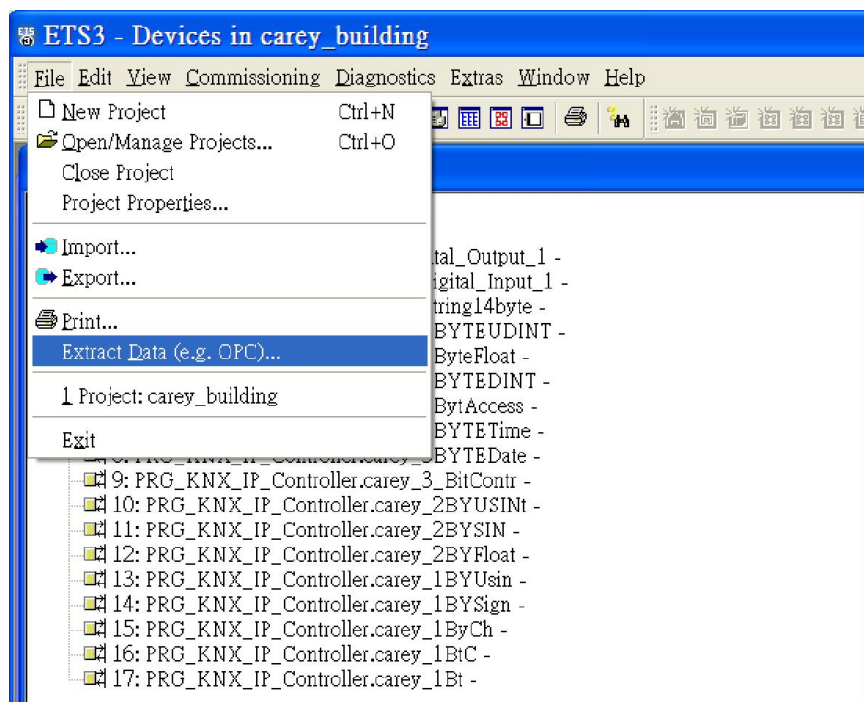
\*Note: Gateway must be configured when using routing protocol.

## Support Device Type:

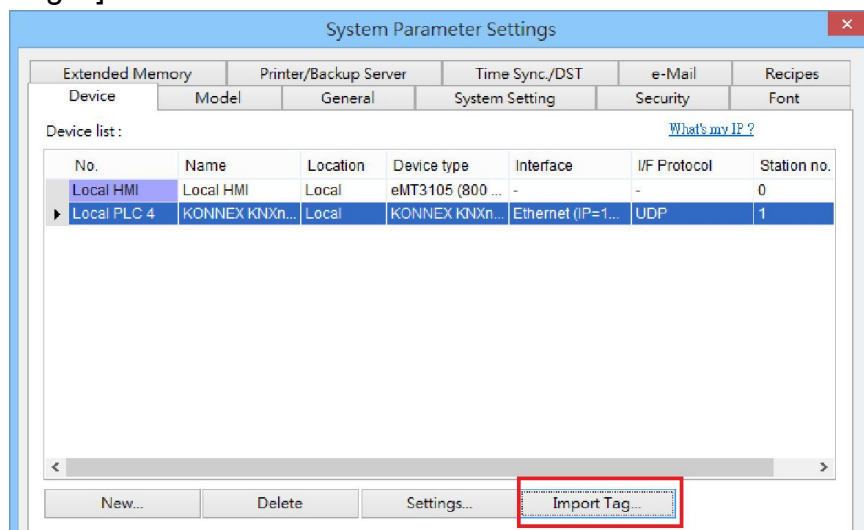
Data type	EasyBuilder data format	Memo
Bool	bit	
Byte	16-bit BCD, Hex, Binary, Unsigned	8-bit
SInt	16-bit BCD, Hex, Binary, Signed	8-bit
USInt	16-bit BCD, Hex, Binary, Unsigned	8-bit
Word	16-bit BCD, Hex, Binary, Unsigned	16-bit
Int	16-bit BCD, Hex, Binary, Signed	16-bit
UInt	16-bit BCD, Hex, Binary, Unsigned	16-bit
DWord	32-bit BCD, Hex, Binary, Unsigned	32-bit
DInt	32-bit BCD, Hex, Binary, Signed	32-bit
Real	32-bit Float	32-bit
UDInt	32-bit BCD, Hex, Binary, Unsigned	32-bit
Array	String	

## PLC Setting:

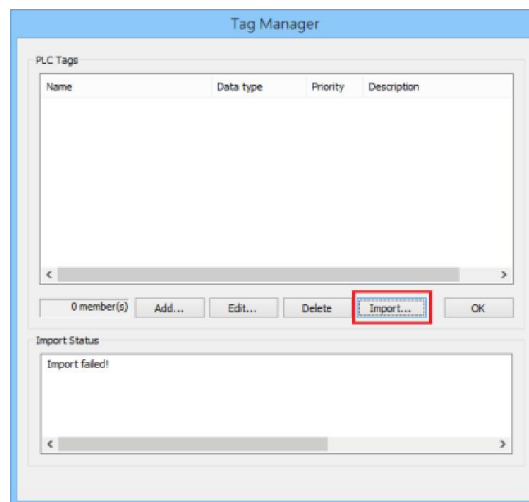
1. Export Tag file using ETS3 software.



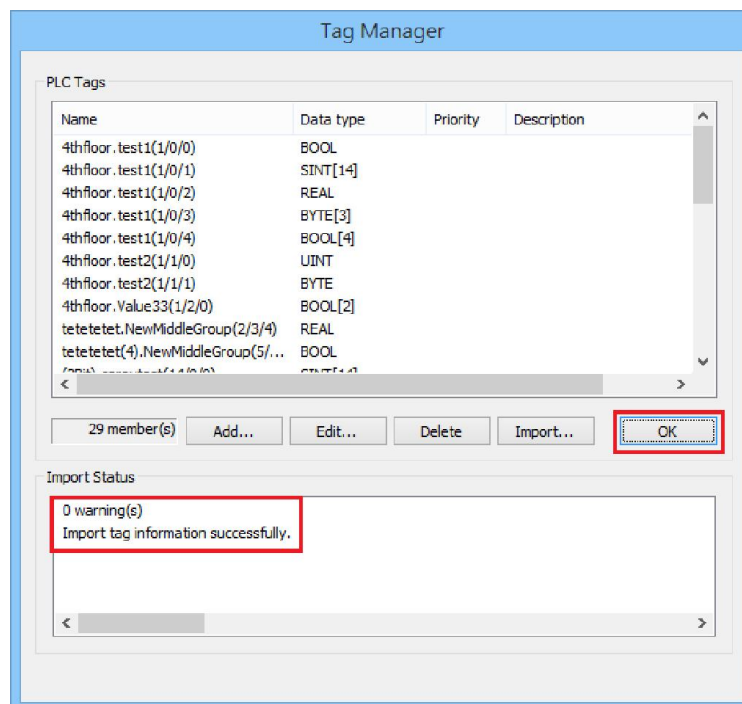
2. In EasyBuilder open System Parameter Settings, add **KONNEX KNXnet/IP** and then click [Import Tag...].



3. In Tag Manager dialog box click [Import...].



4. Select .esf file and then click [OK] to finish importing tags.



## Wiring Diagram:

Ethernet cable:

