

## Mitsubishi MR-MQ100 (Ethernet)

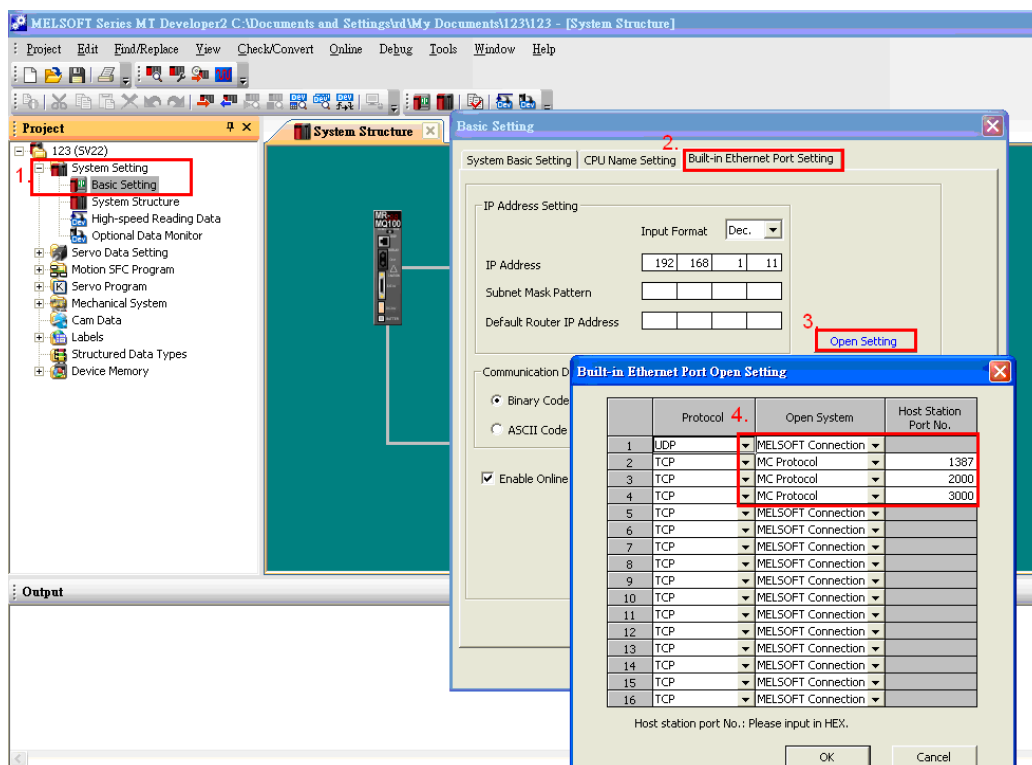
Supported Series: Mitsubishi MR-MQ100-Ethernet

Website: <http://www.mitsubishi-automation.com>

### HMI Setting:

| Parameters          | Recommended                        | Options | Notes                           |
|---------------------|------------------------------------|---------|---------------------------------|
| <b>PLC type</b>     | Mitsubishi MR-MQ100 (Ethernet)     |         |                                 |
| <b>PLC I/F</b>      | Ethernet                           |         |                                 |
| <b>Port no.</b>     | Set identically to the PLC setting |         | Advised to set port no. to 4999 |
| <b>Parameter1</b>   | 1                                  |         | Network No.                     |
| <b>PLC sta. no.</b> | 255                                |         |                                 |

### PLC Setting:



1. Click [Basic Setting].
2. [Built-in Ethernet Port Setting].
3. Click [Open Setting] and then set the IP address and communication data code.
4. Set the MC Protocol-TCP Port No. (Hex)

## Device Address:

| Bit/Word | Device type | Format  | Range        | Memo             |
|----------|-------------|---------|--------------|------------------|
| B        | SM          | DDDD    | 0 ~ 2255     | Special Relay    |
| B        | X           | HHHH    | 0 ~ 1fff     | Input            |
| B        | Y           | HHHH    | 0 ~ 1fff     | Output           |
| B        | M           | DDDDD   | 0 ~ 61439    | Internal Relay   |
| B        | F           | DDDDD   | 0 ~ 32767    | Annunciator      |
| B        | B           | HHHH    | 0 ~ efff     | Link Relay       |
| B        | D_Bit       | DDDDDDh | 0 ~ 4184063f |                  |
| W        | SD          | DDDD    | 0 ~ 2255     | Special Register |
| W        | D           | DDDDDD  | 0 ~ 4184063  | Data Register    |
| W        | W           | HHHHHH  | 0 ~ 3fd7ff   | Link Register    |
| W        | #           | DDDDD   | 0 ~ 12287    | Motion Register  |

Note: ddd: Decimal, hhh: Hexadecimal, ooo: Octal.

## Wiring Diagram:

Ethernet cable:

