

## OPC UA Client

Supported Series: Weintek OPC UA Server, Unified Automation, Prosys, Kepware

### HMI Setting:

Parameters	Recommended	Options	Notes
<b>PLC type</b>	OPC UA Client		
<b>PLC I/F</b>	Ethernet		
<b>Port no.</b>	4840		
<b>Security policy</b>	None	None / Basic128Rsa15 / Basic256 /	
<b>Message security mode</b>	None	None / Sign/ SignAndEncrypt	

<b>On-line simulator</b>	Yes	<b>Multi-HMI connect</b>	Yes
--------------------------	-----	--------------------------	-----

### Support Device Type:

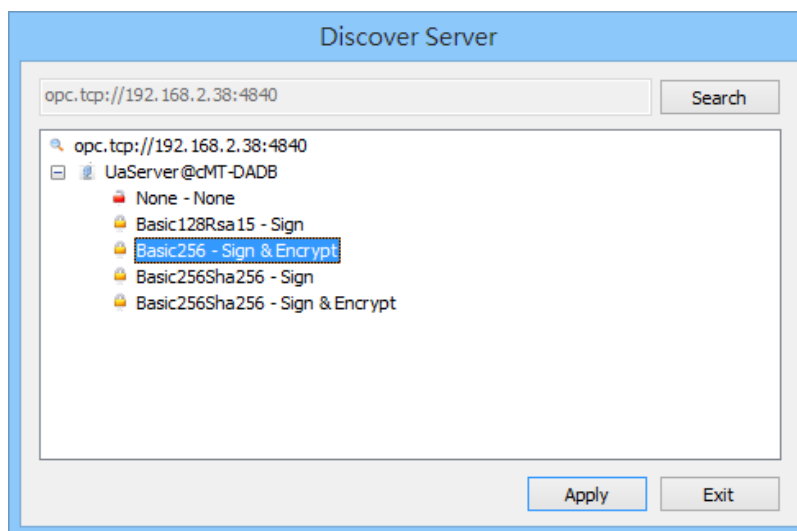
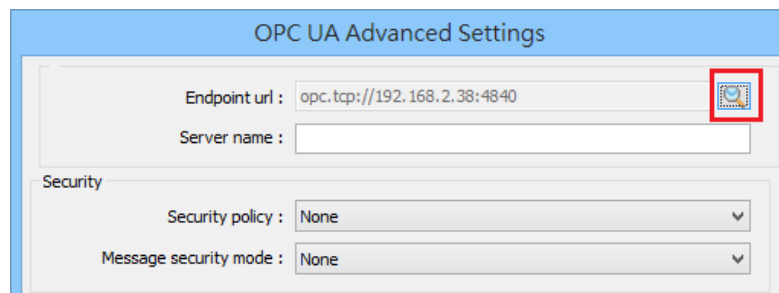
Data type	EasyBuilder data format	Memo
Bool	bit	
Int	16-bit BCD, Hex, Binary, Signed	16-bit
UInt	16-bit BCD, Hex, Binary, Unsigned	16-bit
DInt	32-bit BCD, Hex, Binary, Signed	32-bit
Real	32-bit Float	32-bit
UDInt	32-bit BCD, Hex, Binary, Unsigned	32-bit
LInt	32-bit Signed	64-bit
ULInt	32-bit Unsigned	64-bit
Double	64-bit Float	64-bit

**Note:** EBPro V6.03.02 or later supports 64 bits data type (**cMT Series only**), but please note that the address limit range is 48 bits in maximum..

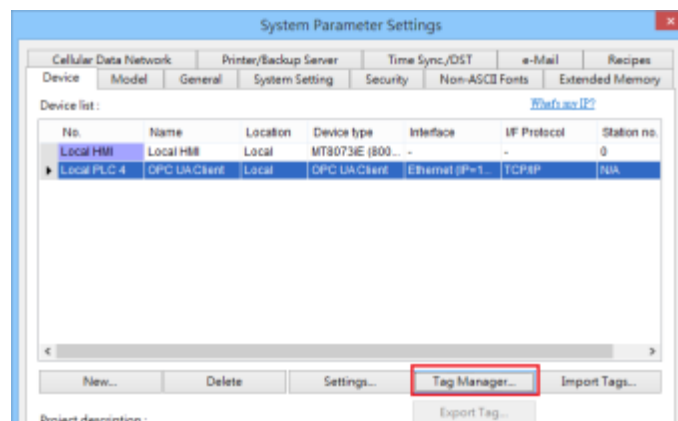
## Get Tags:

1. In EasyBuilder Pro, add OPC UA Client into the device list, set **[IP address]**, **[Port no.]**, and then open **[Security, Authentication]**.

2. Click the magnifier icon near the **[Endpoint url]** field to open Discover Server window. In the window the security parameters of OPC UA Server can be found. Click **[Apply]**, the parameters will be automatically filled into the fields in Security group box in OPC UA Settings window. Finish the rest of the settings and then click **[OK]** to leave.



3. Click Tag Manager. If **“Connection failed.”** message appears, please check the communication parameters.

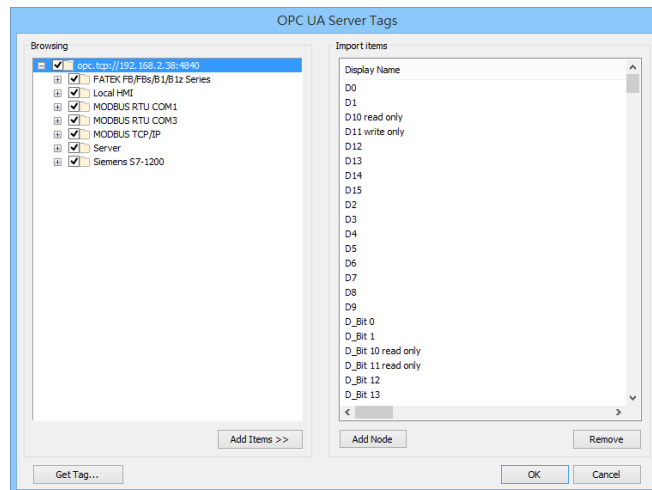


4. In the Browsing list select the tags to be imported, click **[Add Items]** to add the selected ones into **[Import items]** list. Click **OK** to save and leave, and “**Get tag information successfully.**” message will show.

**Get tag:** Get tag information again.

**Remove:** Remove tag information.

**Add Node:** Add tag manually.



## Wiring Diagram:

**Ethernet cable:**

