

Parker Compax3

Supported Series: Parker Compax3 Servo Drive.

Website: <http://www.parker.com>

HMI Setting:

RS232

| Parameters | Recommended | Options | Notes |
|--------------|----------------|-----------------|---------------------|
| PLC type | Parker Compax3 | | |
| PLC I/F | RS232 | | |
| Baud rate | 115200 | | |
| Data bits | 8 | 7 or 8 | |
| Parity | None | Even, Odd, None | |
| Stop bits | 1 | 1 or 2 | |
| PLC sta. no. | 0 | 0 | Must be 0 for RS232 |

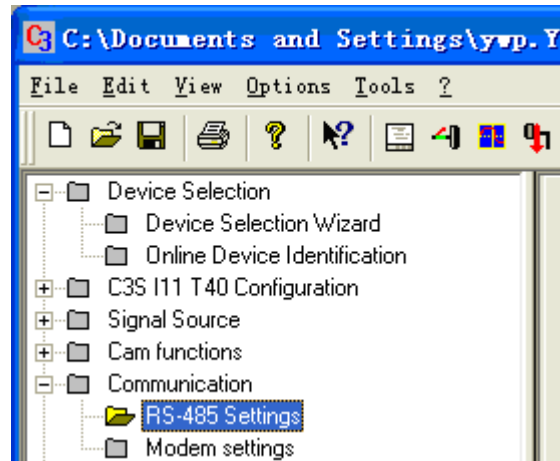
RS485

| Parameters | Recommended | Options | Notes |
|--------------|----------------|-----------------|---|
| PLC type | Parker Compax3 | | |
| PLC I/F | RS485 2W | | |
| Baud rate | 9600 | | |
| Data bits | 8 | 7 or 8 | |
| Parity | None | Even, Odd, None | |
| Stop bits | 1 | 1 or 2 | |
| PLC sta. no. | 1 | 1-99 | Range from 1 to 99 for RS485, according to the PLC setting. |

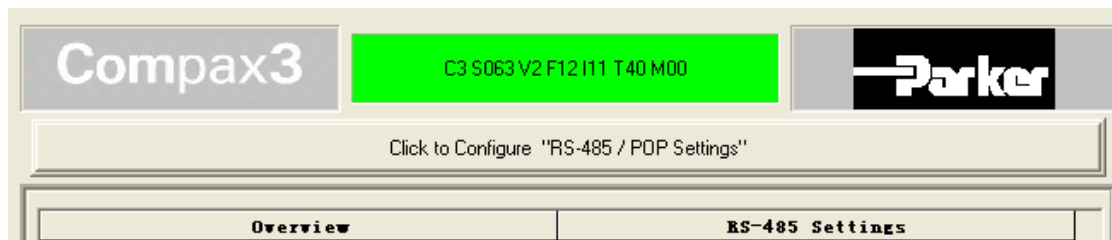
PLC Setting:

How to set Compax 3 servo to RS485 mode?

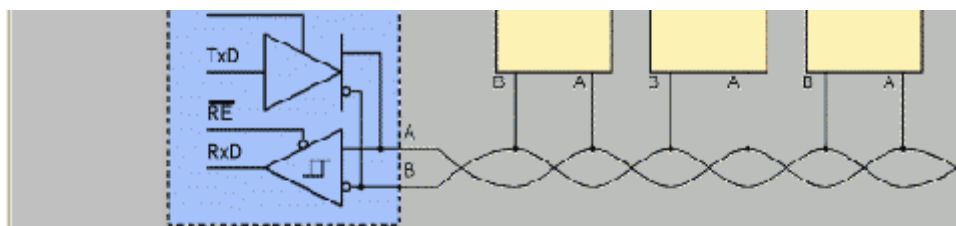
1. Open C3 ServoManager2, select "Communication" => "RS-485 Settings".



2. Click to Configure "RS-485/POP Settings".



3. Set parameters as below:



RS-485 Settings

| Master | General |
|-------------------|----------|
| Multicast Address | 98 |
| Device Address | 11 |
| Baud rate | 9600 |
| Connection Type | Two wire |
| Parity | No |
| Stop bits | 1 |
| Data bits | 8 |

4. Download settings to Compax3 Servo.

5. Set EasyBuilder system parameter and connect with PLC for communication of HMI and Servo.

Device Address:

| Bit/Wor | Device type | Format | Range | Memo |
|---------|----------------|-----------|---------------|-------------------------|
| B | R_Low16bit | DDDDDDDDh | 0 ~ 99999999f | |
| B | R_High16bit | DDDDDDDDh | 0 ~ 99999999f | |
| DW | Register_Int | DDDDDD | 0 ~ 999999 | For Register INT32, U32 |
| DW | Register_float | DDDDDD | 0 ~ 999999 | For Register INT32, U32 |
| W | Register_Short | DDDDDD | 0 ~ 999999 | For Register INT16, U16 |

The range of the address that can be operated depends on the address type.

(For more information, please see PLC Connection Guide)

For example:

If the read / write address is: 1901.2, please enter 190102

If the read / write address is: 400.1, please enter 40001

Wiring Diagram:

Parker Compax3 PLC X10 : RS232 (Diagram 1 ~ Diagram 3)

Diagram 1

| | |
|-------------------|---|
| cMT Series | <i>cMT3071 / cMT3072 / cMT3090 / cMT3103/cMT3151</i> |
| eMT Series | <i>eMT3070/ eMT3105 / eMT3120 / eMT3150</i> |
| MT-iE | <i>MT8073iE / MT8102iE</i> |
| MT-XE | <i>MT8092XE</i> |
| MT-iP | <i>MT6103iP/ MT8102iP</i> |

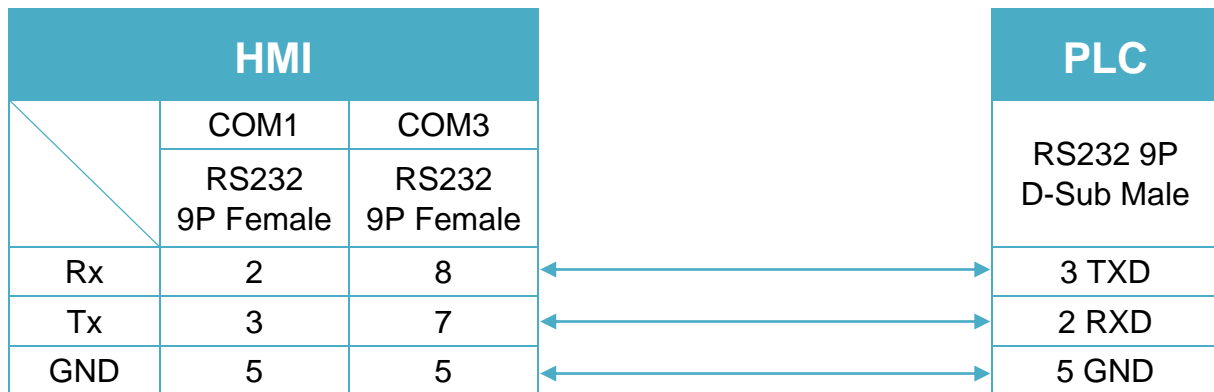


Diagram 2

| | |
|-------------------|---|
| cMT Series | <i>cMT-SVR/ cMT-G01 / cMT-G02 / cMT-HDM / cMT-FHD</i> |
| mTV | <i>mTV</i> |
| MT-iE | <i>MT8070iE / MT6070iE / MT8100iE / MT8121iE / MT8150iE / MT8071iE / MT6071iE / MT8072iE / MT6072iE / MT8073iE / MT8101iE / MT8102iE / MT8103iE</i> |
| MT-XE | <i>MT8121XE / MT8150XE / MT8090XE</i> |

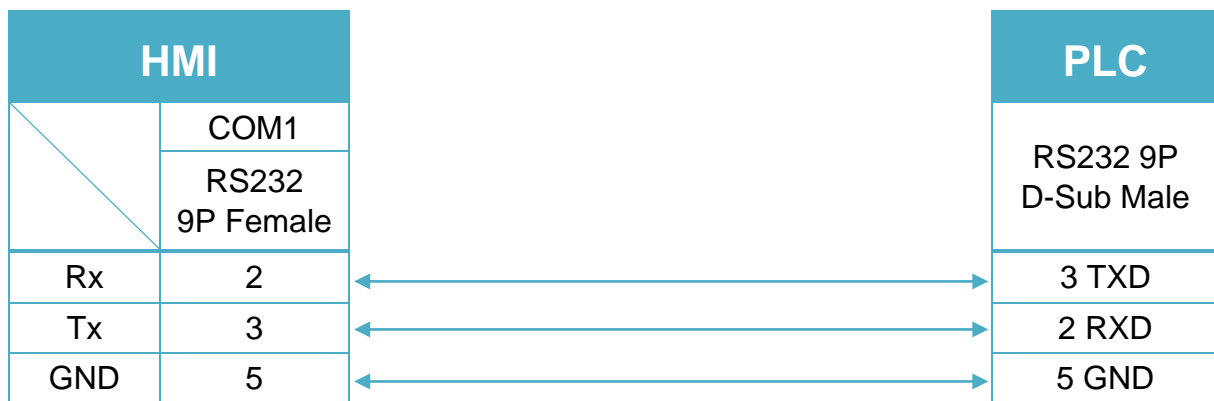
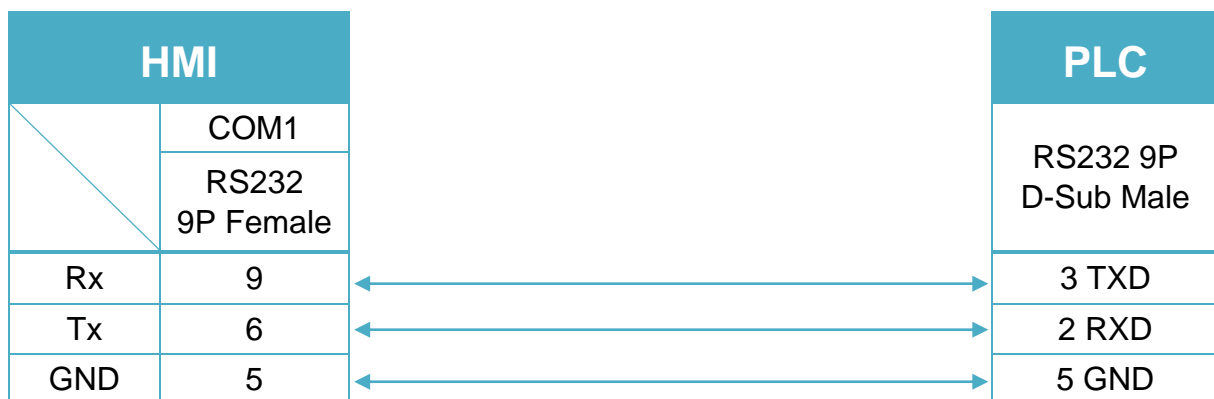


Diagram 3

| | |
|--------------|--|
| MT-iE | <i>MT8050iE / MT8053iE</i> |
| MT-iP | <i>MT6051iP / MT8051iP / MT6071iP / MT8071iP</i> |



Parker Compax3 PLC X10 : RS485 2W (Diagram 4 ~ Diagram 9)

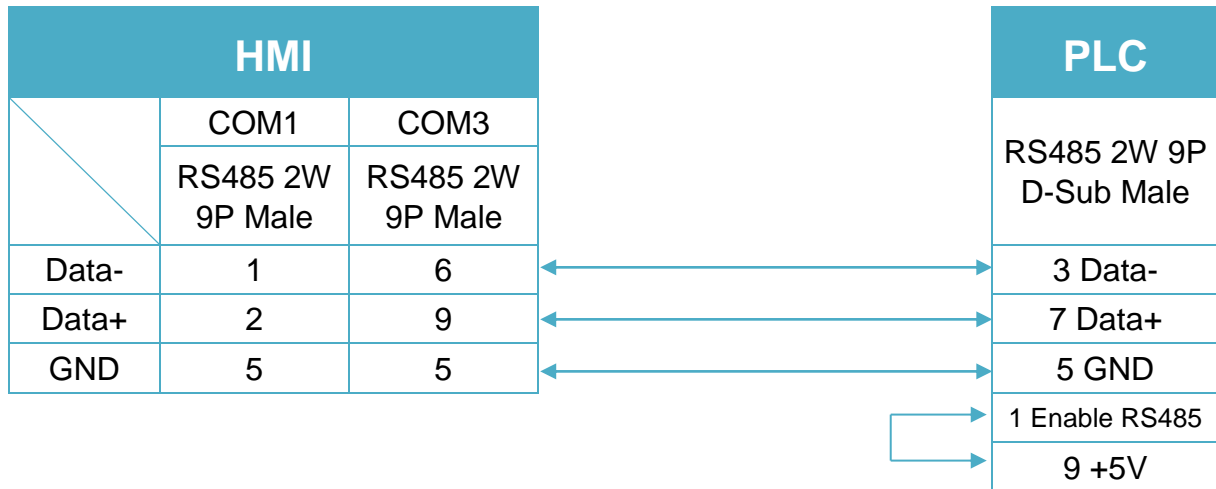
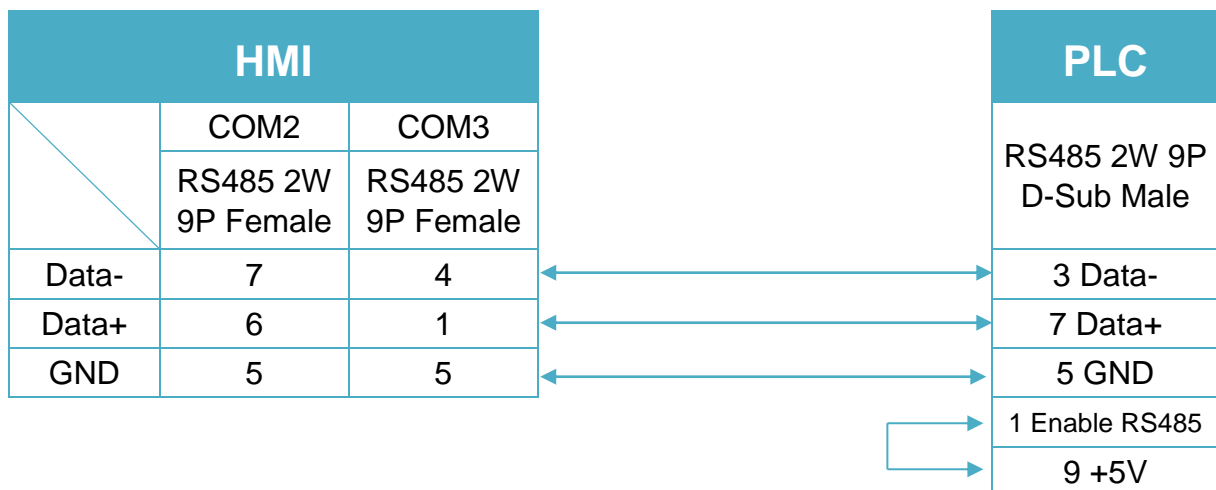
Diagram 4
cMT Series *cMT3151*
eMT Series *eMT3070/ eMT3105 / eMT3120 / eMT3150*

Diagram 5
cMT Series *cMT-SVR / cMT-G01 / cMT-G02 / cMT-HDM / cMT-FHD*
mTV *mTV*


Diagram 6

MT-iE *MT8070iE / MT6070iE / MT8100iE / MT8121iE / MT8150iE*

MT-XE *MT8121XE / MT8150XE*

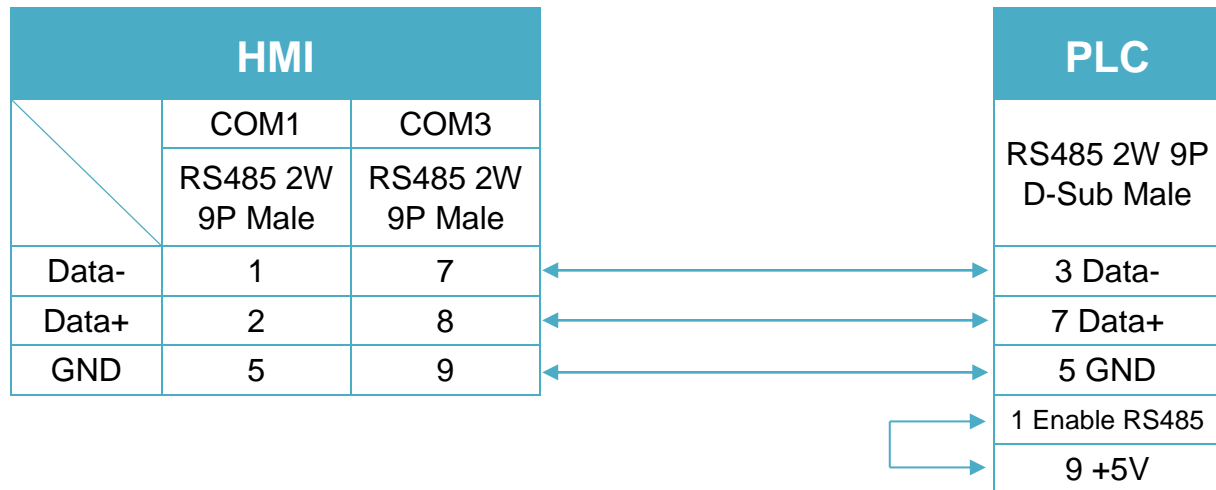


Diagram 7

cMT Series *cMT3071 / cMT3072 / cMT3090 / cMT3103*

MT-iE *MT8071iE / MT6071iE / MT8072iE / MT6072iE / MT8073iE / MT8101iE / MT8102iE / MT8103iE*

MT-XE *MT8090XE / MT8092XE*

MT-iP *MT6103iP / MT8102iP*

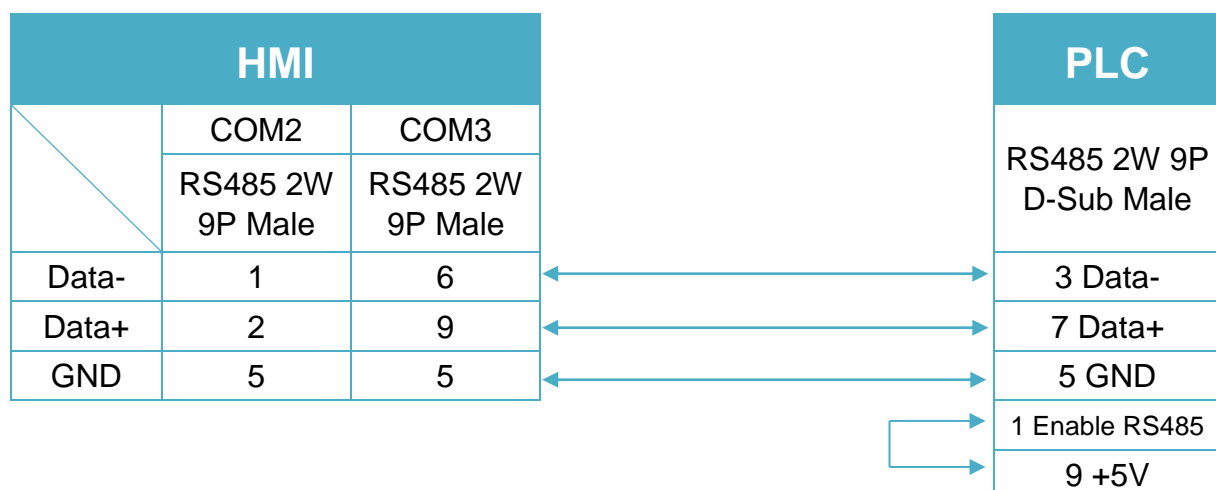


Diagram 8

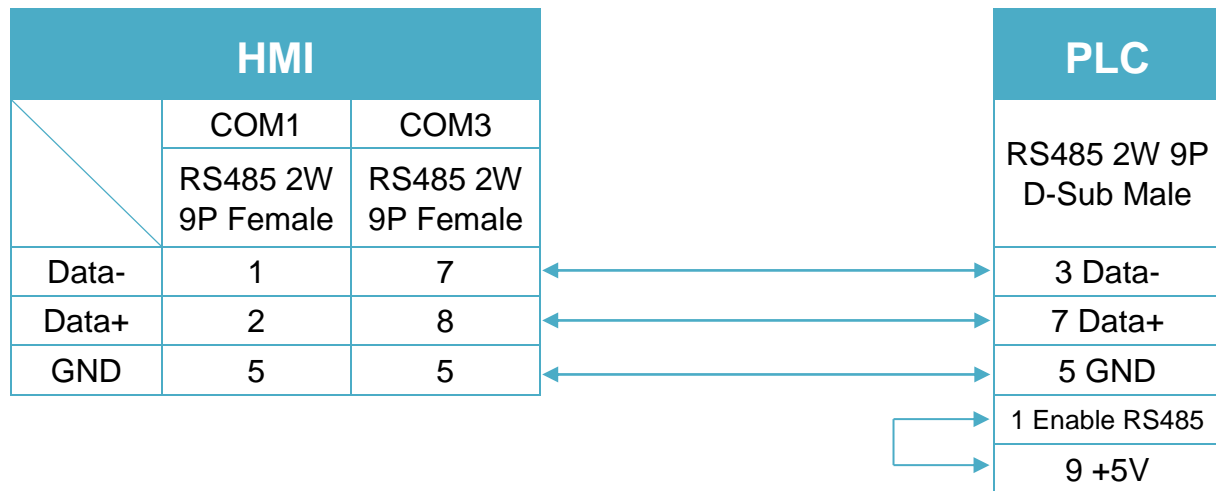
MT-iE *MT8050iE/ MT8053iE*
MT-iP *MT6051iP/ MT8051iP*


Diagram 9

MT-iP *MT6071iP / MT8071iP*
